

SINCE 1885

BERKEMANN COMFORT SHOES



ACTIVE  
COMFORT  
CARE

 **berkemann**  
Comfort meets walking

**COMFORT  
MEETS  
WALKING.**

## COMFORT SHOES SINCE 1885

We like healthy footwear! For us, this means: contemporary, modern comfort shoes, from open sandals and mules to clogs, sporty sneaker styles and certified professional shoes, to closed low shoes and booties in winter – always with comfort and always with function.

That's why you'll find models that actively train your foot muscles, such as our Original Sandal with poplar wood sole, as well as models that are comfortable to wear due to their comfort features, such as soft padding, closure solutions or cushioning soles, making standing and walking a pleasure. In addition, there are our models with special functions, such as partial stretch inserts and our foot comfort products, which alleviate foot complaints caused by pressure points, thus relieving stressed feet in a targeted manner.

ACTIVE. COMFORT. CARE. From Berkemann. From one source.

# OUR COMPETENCE BASED ON EXPERIENCE.

For more than 135 years we have been manufacturing comfort shoes that are characterized by foot-friendly and comfortable fit, high-quality materials from European suppliers, durability and therefore sustainability. All this, combined with the craftsmanship of our Hungarian shoemakers, results in contemporary comfort shoe models in which you simply feel comfortable.

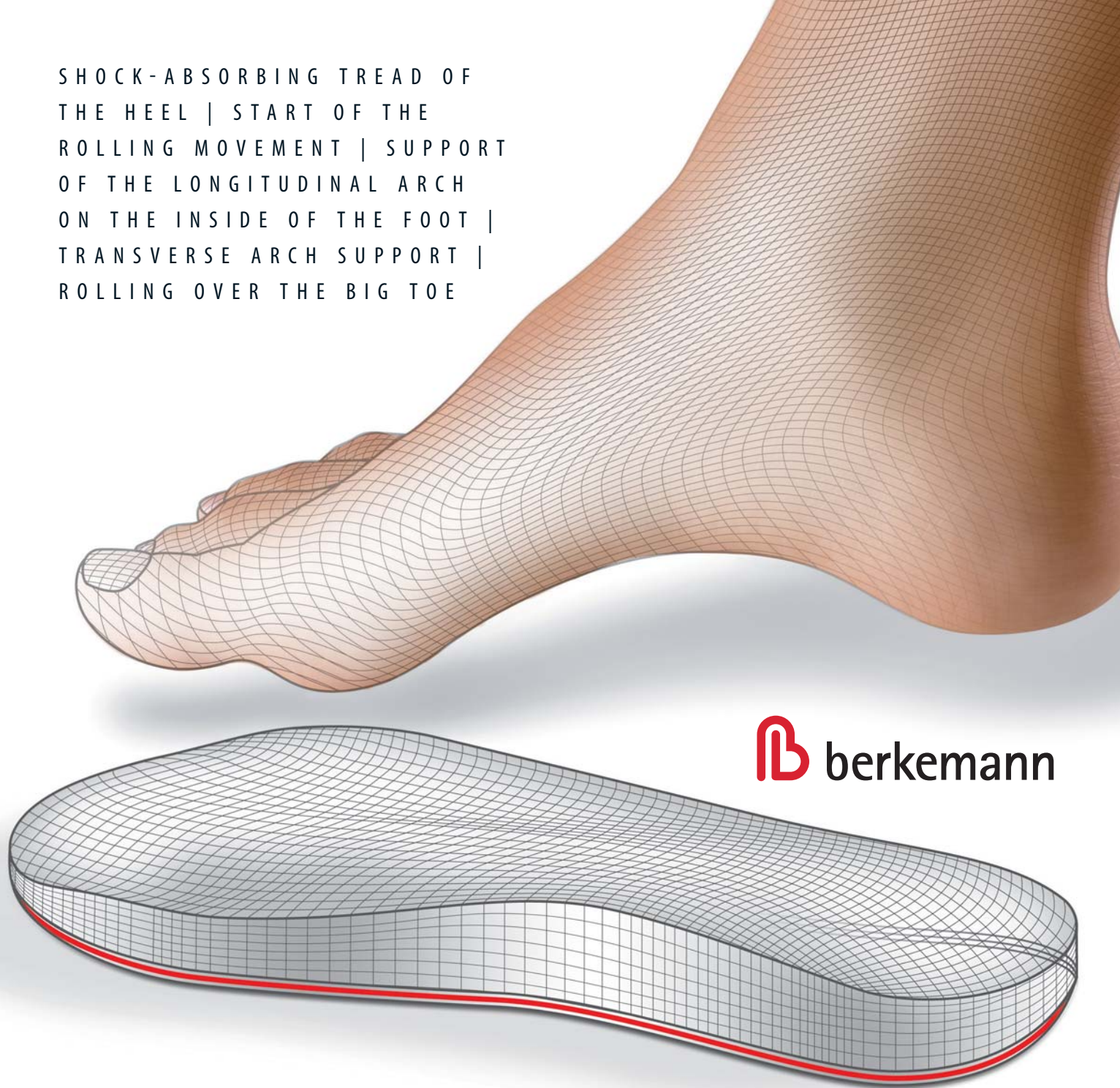


SHOEMAKER CRAFT  
WITH LOVE FOR DETAIL

# BERKEMANN ORIGINAL 5-PHASE FOOTBED.

Developed in the early 1960s in collaboration with medical scientists for the prevention of children's foot defects, this three-dimensional footbed was first realised on the wooden soles of the iconic Berkemann Original gymnastics sandals. Equipped with an active and passive principle of action and constantly revised over the decades according to the latest findings of foot orthopedics, the original 5-phase footbed is still the bridge that connects all Berkemann comfort footwear models. This footbed stabilizes the natural foot anatomy during the passive phase of the standing and supports the natural rolling process of the foot during the active phase of walking.

SHOCK-ABSORBING TREAD OF  
THE HEEL | START OF THE  
ROLLING MOVEMENT | SUPPORT  
OF THE LONGITUDINAL ARCH  
ON THE INSIDE OF THE FOOT |  
TRANSVERSE ARCH SUPPORT |  
ROLLING OVER THE BIG TOE



 berkemann

CONTEMPORARY  
COMFORT SHOES  
WITH INDIVIDUAL  
FUNCTIONS







berkemann

# JUST MADE TO FIT.

Foot-friendly widths of the sole shapes as well as sufficient volume of the uppers and straps are our basic demand on foot-healthy comfort shoes. And to meet each foot individually, you will find different product and functional lines that provide the right solution for each foot.

This starts with softly padded inner soles, models with removable footbeds and continues with additional comfort features, such as practical hook and loop fasteners and partial stretch inserts, to comfort sneakers with three-dimensional knitted uppers, whose filaments originate from medical technology.



ACTIVE.  
COMFORT.  
CARE.

ORIGINAL  
5-PHASE  
FOOTBED

FOOT-  
HEALTHY  
WIDTHS

SOFTLY  
PADDED  
INSOLES

REMOVABLE  
FOOTBEDS

PRACTICAL  
FASTENER  
SOLUTIONS

PARTIAL  
STRETCH  
INSERTS

INNOVATIVE  
UPPERS

CERTIFIED  
WORK SHOES



# BERKEMANN PRODUCT LINES.

The right shoe for every foot, the right solution for every problem. With our different product and functional lines we offer a wide range of shoe models. Berkemann offers models that actively promote foot health, that combine comfort and function, as well as models that ensure that the feet are specifically relieved or protected in places where they are heavily stressed. Physical well-being begins with the feet.

## BERKEMANN BERKINA

WITH THE SOFTLY  
PADDED BERKEMANN  
ORIGINAL 5-PHASE  
FOOTBED



The models of the Berkina Line will get you comfortably through the entire day. The softly padded and anatomically shaped footbed ensures at the same time a thoroughly pleasant walking sensation. The Original 5-phase footbed, which is incorporated in the Berkina Line models, supports the natural rolling movement of the foot while the cup-shaped heel support relieves joints.



## BERKEMANN WASHABLE

WITH GENUINE LEATHER  
COMFORT SHOES YOU  
CAN SIMPLY WASH



You'll get a real kick out of the comfort shoe models in the Washable Line which are available with a softly padded fixed footbed or a removable footbed. A special treatment applied at the tannery helps to keep the natural oils of the leather so that the shoes stay soft and flexible even after having been washed multiple times. A sample bottle of special liquid detergent and a washing net to protect your shoes during the washing process are enclosed with each pair.



## BERKEMANN FELT

WITH COMFORTABLE  
SLIPPERS YOU SIMPLY  
FEEL GOOD IN



The Felt Line range includes slipper versions with a softly padded fixed footbed or a removable footbed. While the natural felt used for all models ensures a cozy and warm wearing comfort, the small percentage of synthetic fiber provides high abrasion resistance so that you will be able to enjoy these comfort shoes for a very long time.



## BERKEMANN COMFORTKNIT

WITH INNOVATIVE  
COMFORT IN KNITS



Interwoven functional zones of different types of knits and bindings give the foot freedom of movement and support where anatomically needed and all of this in a great sneaker look. This is made possible by the latest knitting technology and high-quality polyamide filaments that originally come from the field of medicine and, therefore, they guarantee the highest skin compatibility. All of the models in the ComfortKnit Line have a removable footbed with the incorporated Original 5-phase footbed.



**BERKEMANN PRODUCT LINES.**

## BERKEMANN BERKOFLEX

WITH EXTRA COMFORT  
THANKS TO THE  
BERKEMANN ORIGINAL  
5-PHASE REMOVABLE  
FOOTBED



The models in the Berkoflex Line are rather convincing by their timeless design and a number of comfort features. A common feature of all the models is the foam-padded insole with the Original 5-phase footbed, covered either with genuine leather or textile. Thanks to the removable footbed, these models are especially well-suited for orthopedic, custom-made insoles.



## BERKEMANN STRETCH

WITH PRESSURE-  
RELIEVING STRETCH  
INSERTS AND PRACTICAL  
REMOVABLE FOOTBEDS



In comfortable shoes from the Berkemann Stretch Line with stretch inserts, tired feet will finally feel good again. The partial stretch inserts in different parts of the shoe provide a stress-relieving fit to the shape of the foot, thereby immediately alleviating discomfort that arises from pressure and chafing points. With additional inner soft padding, the highly flexible material looks almost exactly like leather on the outside.



## BERKEMANN ORIGINALS

ACTIVE ON THE MOVE  
WITH WOODEN SOLES AND  
THE BERKEMANN ORIGINAL  
5-PHASE FOOTBED



Berkemann Originals are icons of the shoemaker's art and influenced at least one generation because these models with wooden soles, whose roots stretch back to the 1950s, are the core of the Berkemann brand. At that time, Berkemann developed the gymnastic sandal with the Original 5-phase footbed that is still in use today. It supports the natural shape of the foot and trains the foot and calf muscles at every step by stimulating and mobilizing the toe grip function. In addition, the shock-absorbing midsole featured in most models cushions the impact of every step, thus relieving joints.



## BERKEMANN WORK

WITH COMFORTABLE  
WORKING SHOES FOR  
A PROFESSIONAL  
APPEARANCE



Whether in kitchens, clinics, or other professional environments – working shoes from the Work Line encourage a feeling of well-being, no matter if you walk or stand. While the Original 5-phase footbed supports the natural rolling movement, simply well-fitting shoes or adjustable straps, depending on the model, ensure a secure foot support. In addition, two different soles – of rubber or PU – guarantee a secure stance in every situation. Upper made of breathable leather or even perforated leather also guarantee a pleasant foot climate, even after a long day at work.





QUALITY CONTROL  
IN HUNGARY



SOLE MACHINE  
AT THE LOCATION  
GERMANY



CONSEQUENT  
INSOURCING IS  
IN OUR HANDS

 berkemann

# MADE IN EUROPE.



We produce our comfort footwear models at four Berkemann production sites in Hungary. From the receipt of goods, and the quality control of the basic materials of European suppliers and tanneries, the cutting by means of state-of-the-art scanning and cutting technology as well as the further processing to the finished model, everything is in our hands.

In addition, we continue to create as many production steps and pre-products as possible on our own by means of consistent in-sourcing, so that, for example, we produce a large part of the soles we need on two rotary runners at our German administrative, logistics and production site.



**WE DELIVER  
MORE THAN**





# ARGUMENTS.

Thanks to our production in Hungary and our modern logistics center in the middle of Germany, we are ideally positioned to serve your orders reliably and as quickly as possible. Regardless of whether it is the processing of your seasonal orders or immediate orders from our extensive year-round assortment or follow-up orders of current seasonal goods. You order – we deliver!



**WE OFFER:**

PRE-ORDER

RE-ORDER  
PROGRAM

YEAR-ROUND  
STOCK

SEASONAL  
DECORATION  
PACKAGES

SERVICE  
TEAM

FAST  
DELIVERY

ADVICE ALSO  
ON SITE

ADVERTISING

PRODUCT  
VIDEOS



# TRADE SUPPORT.

We offer our Berkemann dealers a variety of support measures. So you get seasonal pre-order goods, as well as a selected re-order assortment or year-round basic models from our bestseller range. For questions of any kind, our service team is at your disposal by phone or e-mail. And to be able to present our models in your shop in an eye-catching way, we are happy to supply seasonal decorative packages and product videos. Just get in touch with us!

# WE LOVE AND LIVE SUSTAINABILITY.

Sustainability starts with products that are characterized by quality in the selection of materials and the careful manufacturing of experienced shoemakers. Because what lasts longer and is valued and cared for in the best case, is already removed from the disposable cycle. But true sustainability is of course also for us a process in which we want to improve a little bit more every day. In this way, new acquisitions and processes are tested for more sustainable and environmentally compatible alternatives, of course also evaluated according to economic feasibility and then implemented. Today, for example, we have an optimized packaging concept that saves large quantities of cardboard and filling materials in shipping to retailers but also in internal transport between our European production sites. Just like the modernization of hardware and software, we have less cut-out of leather.

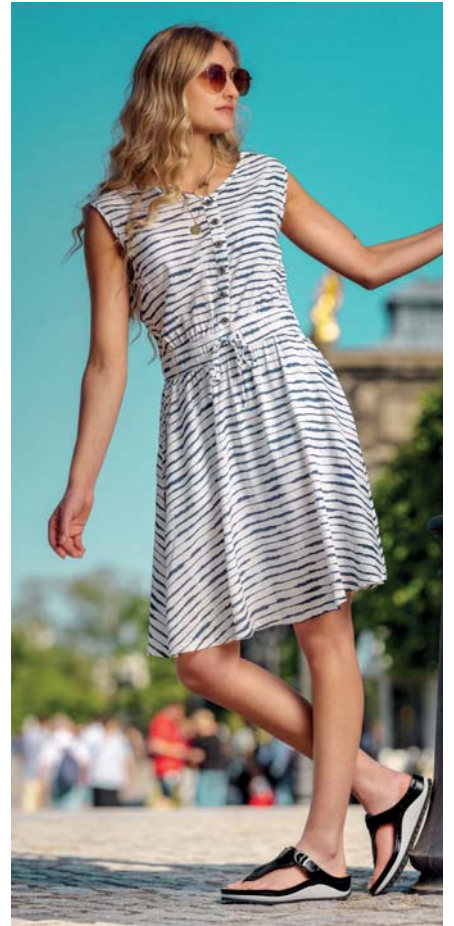




WE TAKE  
CARE OF FUTURE  
GENERATIONS



QUALITY COMFORT  
INNOVATIVE FIT EX



5-PHASE-FOOTBED  
EXTRA COMFORTABLE



**Berkemann GmbH & Co. KG** | Albin-May-Str. 3 | 07937 Zeulenroda | Germany  
[www.berkemann.com](http://www.berkemann.com) | [info@berkemann.com](mailto:info@berkemann.com)