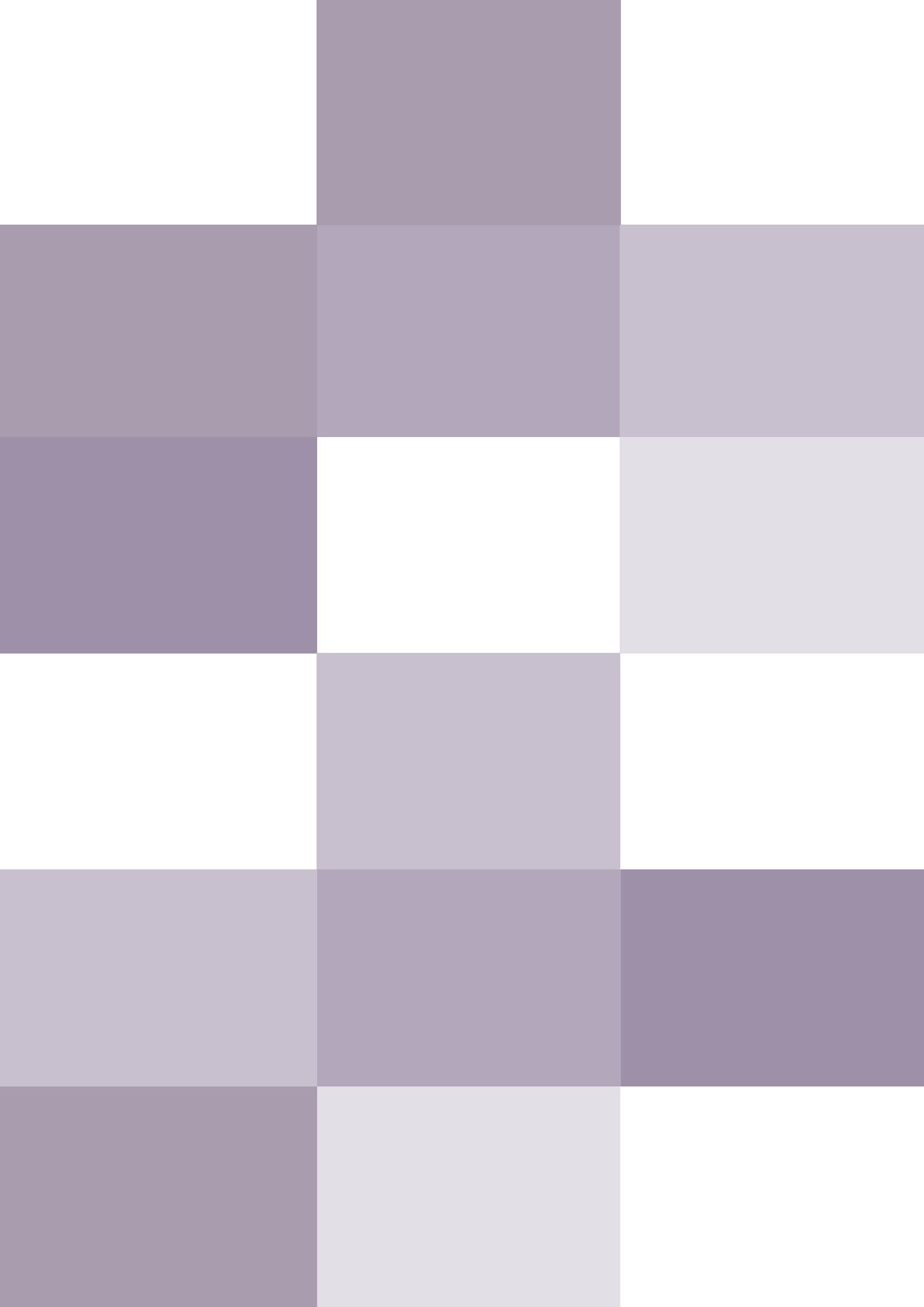


**Discover Tierrfino**

**Tierrfino  
Products**  
Complete Selection

**Living walls with clay**



 **Tierrfino**  
...natürlich Lehm

T +49 (0)251-60990-0

E [info@tierrfino.de](mailto:info@tierrfino.de)

W [www.tierrfino.de](http://www.tierrfino.de)

A Dornierweg 4-6  
48155 Muenster



## Carl Giskes: The Man Behind Tierrfino



It all began in the 1970s when Carl Giskes (\*1949, Krefeld) decided to embark on a seven-year journey across the African continent. It was on this trip that Carl first became acquainted with houses made of clay, which he was able to experience up close in the breathtaking 'adobe city' of Djenné Mali. After living for some time with the inhabitants of Djenné Mali in their adobe houses, he travelled back to Germany in 1977 and began working as a student of the famous artist Joseph Beuys.

Beuys even asked Carl Giskes if he would like to lead part of his Free International University of Creativity. Although this collaboration did not materialise, the two continued to work together on projects, including a sculpture by Beuys that was exhibited at Documenta 7 in Kassel in 1982. It was here that Carl met the loam architect Klaus Johannes Eckert and Gernot Minke, the first professor of loam construction at the University of Kassel. Fascinated by their stories and experiences, Carl remembered his time in Djenné Mali and decided to spend the following years learning all he could about clay as a building material and loam construction. In 1986, globetrotter Carl Giskes moved to Amsterdam, where he worked until 1990 on the construction of the Adobe Pavilion, which was later visited by the Dalai Lama. Carl liked the Netherlands so much that he decided to stay and founded Leembouw Nederland in 1992. Leembouw Nederland was the first company in the Netherlands to specialise in the production and sale of clay products and laid the foundations for Tierrfino.

His countless workshops, lectures and courses in the following years made many architects realise that clay can be a healthy alternative to conventional building materials. It was not until the top Swiss architects Herzog & de Meuron began using clay as a building material, thanks to Carl's work, that the specialist press began to write about the founder of Tierrfino. Today, Tierrfino continues to demonstrate that a good indoor climate is primarily created by clay products and the effect that natural earth tones have on people. In addition to the showrooms, where products and applications are on display, Tierrfino's products are constantly being developed and improved in the laboratory and new products are being designed. Workshops, meetings and personal advice complete the Tierrfino brand and familiarise both the layman and the expert with our products. Thanks to Carl, Tierrfino has become a brand that is constantly evolving, while still adhering to Carl's vision of creating a beautiful, healthy and ecologically high quality space in which people feel comfortable.



## Primer

<b>fix</b>	Deep Foundation and Strenghtener	8
<b>contact</b>	Primer	8
	fine	8
	coarse	8
	extra	8

## Plaster

<b>BASE</b>	Clay Adhesive and Reinforcing Mortar	9
	Clay Plaster universal	9
	Clay Basecoat	10
	Clay Topcoat	10
	Clay Plaster White	11
	Clay Topcoat Fine	11
<b>KALK</b>	Lime Undercoat	14
	Lime Topcoat Fine	14
	Lime Mortar	15

## Paint

<b>DRY-PAINT</b>	Clay Powder Paint	18
<b>I-PAINT</b>	Clay Paint	20

## Brush-on Plaster

<b>T-PAINT</b>	Clay Brush-On Plaster	22
----------------	-----------------------	----

## Fine Topcoat

<b>BASE</b>	Clay Topcoat Fine	26
<b>DURO</b>	Clay Topcoat Fine	28
<b>X-WHITE</b>	Clay Topcoat Fine	30
<b>FINISH</b>	Clay Topcoat Fine	32
<b>BASE</b>	Clay Plaster White	34

## Design Surfacer

<b>ANTIQUÉ-PROVENCE</b>	Clay Design Surfacer	38
<b>BETON-LOOK</b>	Clay Design Surfacer	40

## Tadelakt

<b>STONE</b>	orig. marocc. Tadelakt	44
--------------	------------------------	----

## Additives + Protection

<b>effekt</b>	Effect Additives	48
<b>pigment</b>	Colour Pigments	49
<b>intense</b>	Bio-Based Hardener	50
<b>protect</b>	Bio-Based Coating	50
<b>soap</b>	Tadelakt Soap	51
<b>wax</b>	Acrylic Wax	51

## Clay Building

<b>BASE</b>	Rammed Earth	54
<b>KOMPAKT+</b>	Interior Insulation System	56





## Primer

**fix**  
**contact**

Deep Foundation and Strenghtener  
Primer  
**fine**  
**coarse**  
**extra**

## Plasters

**BASE**

Clay Adhesive and Reinforcing Mortar  
Clay Plaster Universal  
Clay Basecoat  
Clay Topcoat  
Clay Topcoat Fine  
Clay Plaster White

# Tierrfino fix

Deep Foundation and Strenghtener



Tierrfino **fix** deep foundation and strenghtener is used to strengthen Tierrfino products- in particular Tierrfino **FINISH** - and to strenghten chalking paints and other porous plaster systems.

# Tierrfino contact

Primer Fine | Coarse | Extra



Tierrfino **contact** Primer Fine is used as a primer for thin-layer Tierrfino products. contact fine is the recommended primer for Tierrfino products **DRY-PAINT**, **I-PAINT**, **T-PAINT**, **DURO** and **X-WHITE**.

Tierrfino **contact** Primer Coarse is used as a primer for thick layer Tierrfino products. It is the recommended substrate primer for Tierrfino products such as **FINISH**, **BASE** clay plasters and **KALK** lime plasters. **contact** Coarse Primer can also be used as a substrate for Tierrfino **I-PAINT** or **DRY-PAINT** to create a textured finish.

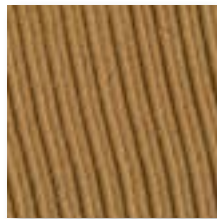
Tierrfino **contact** Primer Extra is used as a primer for problematic substrates such as wood. It is the only primer that can be used with our **ANTIQUÉ-PROVENCE** clay surfacer.

# Tierrfino BASE

Clay Adhesive and Reinforcing  
Mortar

# Tierrfino BASE

Clay Plaster Universal



Tierrfino BASE Adhesive Clay is a clay based adhesive and reinforcing mortar for various interior applications. BASE Adhesive Clay is used on plasterboard or similar substrates as an adhesive and reinforcing mortar for clay building boards and internal wall insulation systems. It is also used as a grouting compound on critical substrates. It can also be used as a finishing coat, provided that good preparation has been carried out. All Tierrfino BASE products and Tierrfino finishes can be applied on the BASE levelling compound.



Tierrfino **BASE** Clay Plaster Universal is a naturally-moist clay plaster for interior use in accordance with DIN 18947. It is suitable as an interior render for new and old buildings and for the restoration of historic buildings. **BASE** contributes to good moisture exchange and a harmonious indoor climate and is recommended for levelling uneven masonry. **BASE** Clay Plaster Universal is well suited as a wall heating plaster. **BASE** is the ideal base for all Tierrfino coloured products.

# Tierrfino BASE

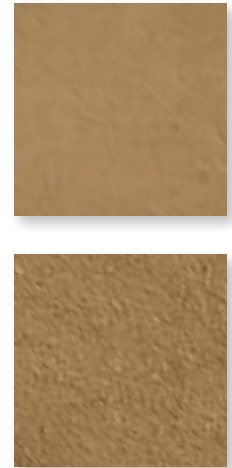
Clay Basecoat dry



Tierrfino **BASE** Clay Basecoat dry is a DIN 18947 compliant interior clay plaster for use in new and old buildings and in the restoration of historic buildings. It contributes to good moisture exchange and a harmonious indoor climate and is recommended for levelling uneven masonry. **BASE** Clay Basecoat dry is very suitable as a wall heating plaster. It is the ideal base for all Tierrfino coloured products.

# Tierrfino BASE

Clay Basecoat naturally-moist



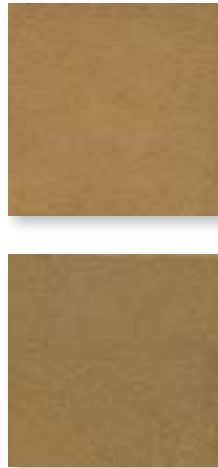
Tierrfino **BASE** Clay Basecoat naturally-moist with flax or straw fibres S II is a naturally moist clay plaster for interior use according to DIN 18947. **BASE** is an environmentally friendly clay mortar. It is suitable as an interior render for new and old buildings and for the restoration of historic buildings. **BASE** Clay Basecoat contributes to good moisture exchange and a harmonious indoor climate and is recommended for levelling uneven masonry. **BASE** Clay Basecoat is very suitable as a wall heating plaster and is the ideal base for all Tierrfino coloured products.

# Tierrfino BASE

Clay Topcoat

# Tierrfino BASE

Clay Topcoat Fine



Tierrfino **BASE** Clay Topcoat S II is a dry plaster for interior use according to DIN 18947 and is an ecologically proper clay plaster. It is suitable as an interior render for new and old buildings and for the restoration of historic buildings. **BASE** Clay Topcoat contributes to good moisture exchange and a harmonious indoor climate and is recommended for leveling out unevenness in masonry. **BASE** Clay Topcoat is ideal for use as a thermal wall finish and is the ideal base for all Tierrfino coloured products.

See page 26 for more information

# Tierrfino BASE

Clay Plaster White



See page 26 for more information



## Lime Plaster

KALK

Lime Basecoat  
Lime Topcoat Fine  
Lime Mortar



# Tierrfino KALK

Lime Basecoat

# Tierrfino KALK

Lime Topcoat Fine



Tierrfino **KALK** Lime Basecoat is a vapour permeable, mineral and cement-free machine plaster in accordance with EN 998-1 for the production of smooth, fine interior wall surfaces in old and new buildings. The **KALK** Lime Basecoat of mortar group PI has strength class CS1 and can be applied to masonry in accordance with EN 1996 1-1, as well as concrete and cellular concrete in one or two layers. The surface is finished after felting or rubbing. It is not necessary to apply a fine plaster.

Tierrfino **KALK** Lime Topcoat Fine is a vapour permeable, mineral and cement-free hand plaster in accordance with EN 998-1 for the production of fine interior wall surfaces in old and new buildings. **KALK** Lime Topcoat Fine of mortar group PI has strength class CS1 and can be applied in one or two coats to masonry in accordance with EN 1996 1-1 as well as to concrete, aerated concrete and render. The surface is finished after felting or rubbing.



# Tierrfino

## KALK

Lime Mortar



Tierrfino **KALK** Lime Mortar is a naturally-moist pure mineral lime mortar in big bags for the production of interior plasters. As a standard plaster, **KALK** Lime Mortar is a 'lime-sand pre-mixed mortar' in accordance with EN 998-1 for interior use with the addition on site of 160 kg/m<sup>3</sup> of CEM I or CEM II cement of strength class 32.5 R or with the addition on site of 150 kg/1.2 t big bag of HL 5 hydraulic lime in accordance with DIN EN 459-1.



## Paint

**DRY-PAINT** Powder Clay Paint  
**I-PAINT** Clay Paint

## Brush-On Plaster

**T-PAINT** Brush-On Plaster

# Tierrfino

## DRY-PAINT

Powder Clay Paint



## All Good Things Come In Threes

The range of Tierrino **DRY-PAINT** Powder Clay Paint includes 14 different colours, each with 8 different shades. The range of colours can be infinitely extended by mixing pigments.

**DRY-PAINT** can be rolled or brushed on as usual, but by adding fine quartz sand it can also be used as a brush-on plaster. And with a little less water, it can be used as a surfacer to create finely marbled surfaces.



# Tierrfino

## I-PAINT

Clay Paint

### Basic Colours



Dover White



Delphi White

### Mixed Colours

Basic Colours + Dover White



Romanian Ochre



Romanian Ochre 50%



Romanian Ochre 20%



Nassau Orange



Nassau Orange 50%



Nassau Orange 20%



Djenné Rot



Djenné Rot 50%



Djenné Rot 20%



Ayers Rock



Ayers Rock 50%



Ayers Rock 20%



Iquitos Grün



Iquitos Grün 50%



Iquitos Grün 20%



Gomera Grau



Gomera Grau 50%



Gomera Grau 20%



rolled



## Matte Play Of Colours

The ,I' in our **I-PAINT** stands for ,Interior' and the name says it all. The creamy texture of our non-drip paint transforms into a silky matt finish on the wall. The colour palette of our **I-PAINT** is made up of pure earth tones and therefore contains no pigments. As we do not use any other additives, it is odourless apart from a slight earthy smell. Combined with the quick-drying formula of our clay paint and the ease of application, it quickly restores a sense of homeliness in spite of the painting.



# Tierrfino T-PAINT

Clay Brush-On Plaster



Dover White



Dover White  
smoothed



Dover White  
diluted



Dover White  
brushed





## Coarse Grains Of Sand, Soft Colours



**T-PAINT**, a coarse-grained brush-on plaster, has been enriched with selected coloured and glossy sands to create an extraordinary radiance, cosiness and atmosphere. The ,T' in **T-PAINT** stands for ,texture' and allows those who find the fine-grained surface of **I-PAINT** too subdued to create a wall with structure and character.

The coarse texture of **T-PAINT** also has acoustic benefits, as it simply absorbs some of the noise.







## Clay Topcoats Fine

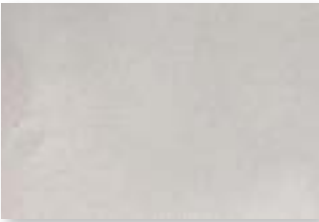
**BASE**  
**DURO**  
**X-WHITE**  
**FINISH**  
**BASE**

Clay Topcoat Fine  
Clay Topcoat Fine  
Clay Topcoat Fine  
Clay Topcoat Fine  
Clay Plaster White

# Tierrfino BASE

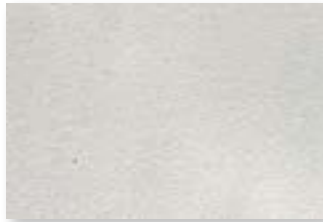
Clay Topcoat Fine  
Brown/Vintage White

smoothed

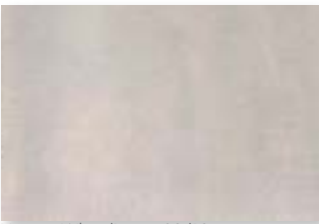


Vintage White

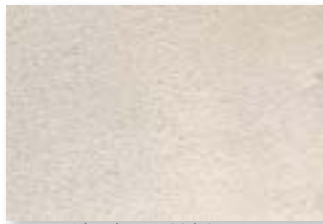
felted



Vintage White



Vintage White/Brown 90/10



Vintage White/Brown 90/10



Vintage White/Brown 70/30



Vintage White/Brown 70/30



Vintage White/Brown 50/50



Vintage White/Brown 50/50



Brown

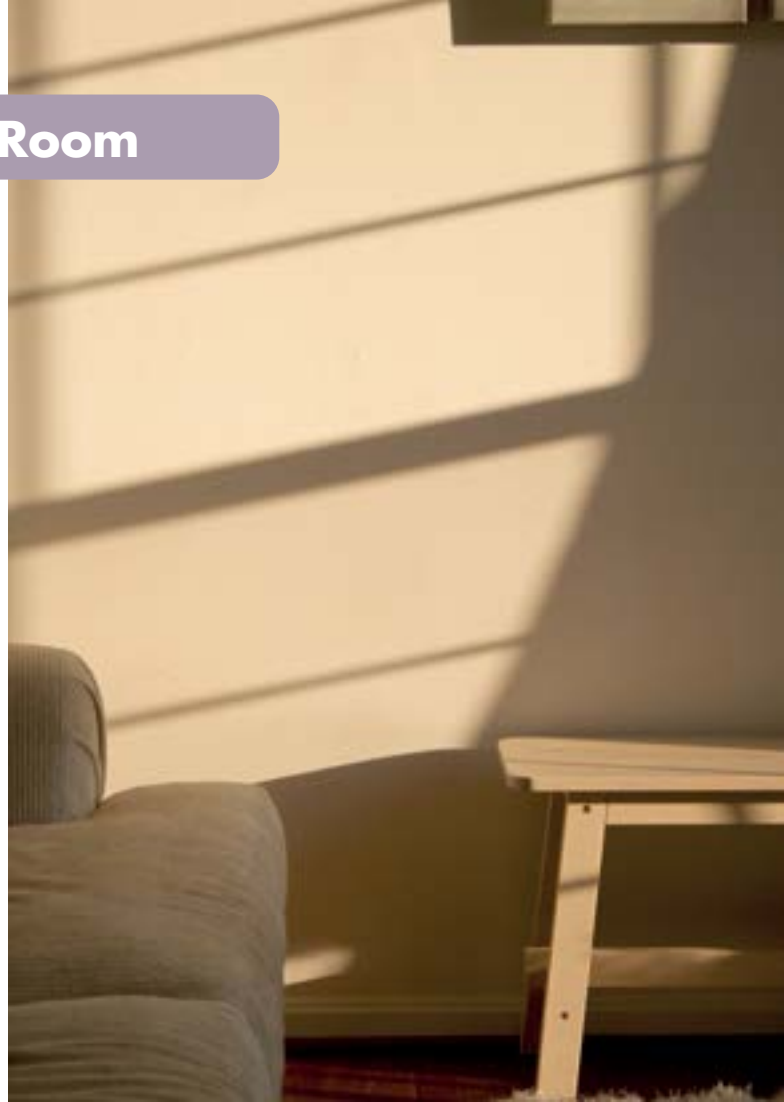


Brown



## Warm Earth For Peace In The Room

Our longing for peace and security is reflected in the warm, earthy tones of our **BASE** clay plasters in vintage white and brown. These colours add a warm and welcoming touch to your home. **BASE** clay plasters are not only easy to apply, they are also elegant to look at. The warm and soft colours, whether felted or smoothed, with or without effect additives, create a cosy atmosphere and a homely ambience.



# Tierrfino

## DURO

Clay Topcoat Fine

### Basic Colour



Dover White



Delphi White



Romanian Ochre



Nassau Orange



Djenné Red



Ayers Rock Red



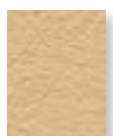
Iquitos Green



Gomera Grey

### Mixed Colour

Dover White + Basic Colour



Romanian Ochre  
50%



Romanian Ochre  
20%



Nassau Orange  
50%



Nassau Orange  
20%



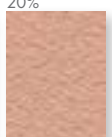
Djenné Red  
50%



Djenné Red  
20%



Ayers Rock Red  
50%



Ayers Rock Red  
20%



Iquitos Green  
50%



Iquitos Green  
20%



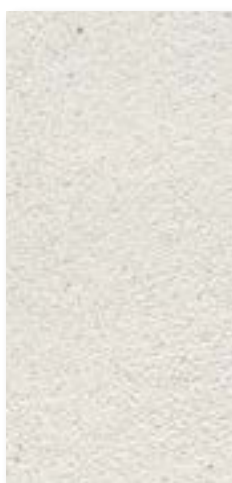
Gomera Grey  
50%



Gomera Grey  
20%



felted



smoothed



## Fine Soil And Sparkling Grain



If you are looking for a pleasant indoor climate and an elegant clay plaster, our **DURO** is the ideal solution. **DURO** combines paint and clay plaster in one product. The use of marble components in the plaster creates fine shimmering light reflections, while the subtle shimmering texture gives any room an elegant appearance.

**DURO** is highly abrasion resistant and easy to repair. Our 8 basic colours can be mixed and combined with our effect additives to offer a wide range of design possibilities.



# Tierrfino

## X-WHITE

Clay Topcoat Fine



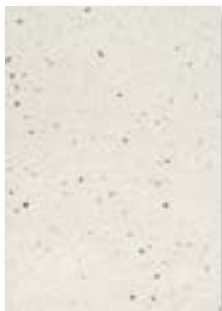
feldet



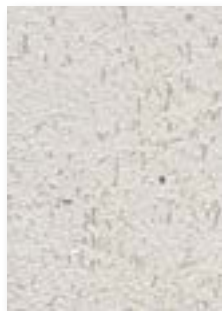
effekt Nero Ebano



effekt Straw



effekt Black Mica



effekt Flax



smoothed



effekt Yellow Sienna



effekt Mother of Pearl





## As White As A Pearl

The **X-WHITE** fine clay plaster is our pearl. With its radiant white colour, which it gets from a special white clay, it is ideal for anyone who wants bright rooms with simple elegance. The marble grains in **X-WHITE** also conjure up subtle reflections of light on the wall. But our **X-WHITE** is not only visually impressive. It is also characterised by its thin-layered and hard-wearing surface.

Further exciting surfaces can be created by adding our effect granules.



# Tierrfino FINISH

Clay Topcoat Fine



## Basic Colours



Dover White



Delphi White



Romanian Ochre



Nassau Orange



Djenné Red



Ayers Rock Red



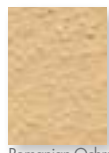
Iquitos Green



Gomera Grey

## Mixed Colours

Dover White + Basic Colour



Romanian Ochre  
50%



Romanian Ochre  
20%



Nassau Orange  
50%



Nassau Orange  
20%



Djenné Red  
50%



Djenné Red  
20%



Ayers Rock Red  
50%



Ayers Rock Red  
20%



Iquitos Green  
50%



Iquitos Green  
20%



Gomera Grey  
50%



Gomera Grey  
20%



felted



smoothed

## Honest Clay

Our **FINISH** Clay Plaster consistently combines the optimum indoor climate properties of clay with modern design. Its purist composition of pure sands and clays, without any binders, makes it our purest product and our longest-lasting companion.

With our eight authentic base colours in pure earth tones and a variety of possible mixes, **FINISH** with its authentic texture is the perfect choice for timeless wall design.



# Tierrfino

## BASE White

Clay Plaster



smoothed

felted



without straw

without straw



with straw

with straw



## Rethinking The Old

When people think of clay plasters, they often think of brown, grainy surfaces. However, the white **BASE** clay plaster brings a whole new perspective to this image. Whether used as a basecoat on masonry or as a topcoat, **BASE** White has a unique finish. In its smoothed form, this clay plaster resembles a sophisticated, modern concrete look that radiates a pleasant warmth despite its linear aesthetic.

Whether classically felted, architecturally combed, rustic brushed or wildly textured, **BASE** can take on a variety of roles. Whichever finish you choose, Tierrfino **BASE** white clay plaster, with its light colour and unique grain structure, is an absolute highlight in any environment.





## Clay Design Surfacer

**ANTIQUE PROVENCE** Clay Design Surfacer  
**BETON-LOOK** Clay Design Surfacer

## Tadelakt

**STONE** orig. marocc. Tadelakt

# Tierrfino

## ANTIQUE-PROVENCE

Clay Design Surfacer

### Basic Colours

### Mixed Colours

			
Dover White 003	001	002	
			
Delphi White 021	005	007	
			
Romanian Ochre 010	008	009	matt
			
Nassau Orange 004	011	012	
			
Dienné Red 006	014	015	glossy
			
Ayers Rock Red 019	016	018	
			
Iquitos Green 013	020	022	waxed
			
Comera Grey 017	023	024	





## Vibrant Walls For Dreaming



**ANTIQUE-PROVENCE** is our decorative clay design surfacer for Mediterranean flair. Its shaded surface is reminiscent of the cosy and warm wall designs of the Mediterranean region.

The characteristic cloudy surface texture is created by the multi-layered application. For more intensive highlighting, **ANTIQUE-PROVENCE** can be finished with **soap**, **protect** or **wax**.



# Tierrfino

## BETON-LOOK

Clay Design Surfacers



double application



double application + Tierrfino soap



double application + Tierrfino wax



double application + Tierrfino wax



double application + wax Mineral White



double application + Tierrfino DRY-PAINT + Tierrfino wax



triple application + Tierrfino wax (diluted 50%)

## Naturally Industrial

While concrete-look walls are often plastered with plastic-modified compounds, our **BETON-LOOK** Clay Deign Surfacer is an all-natural product made from clay, sand and starch. With the character of a concrete surface, it brings a cool and modern loft style to any room. The beauty of the raw material is expressed in the rough, porous surface. Industrial style with enduring charm.



# Tierrfino STONE

Tadelakt



## Basic Colour



Delphi White

## Mixed Colours

Delphi White + pigment



\*1 all colours can be mixed with each other



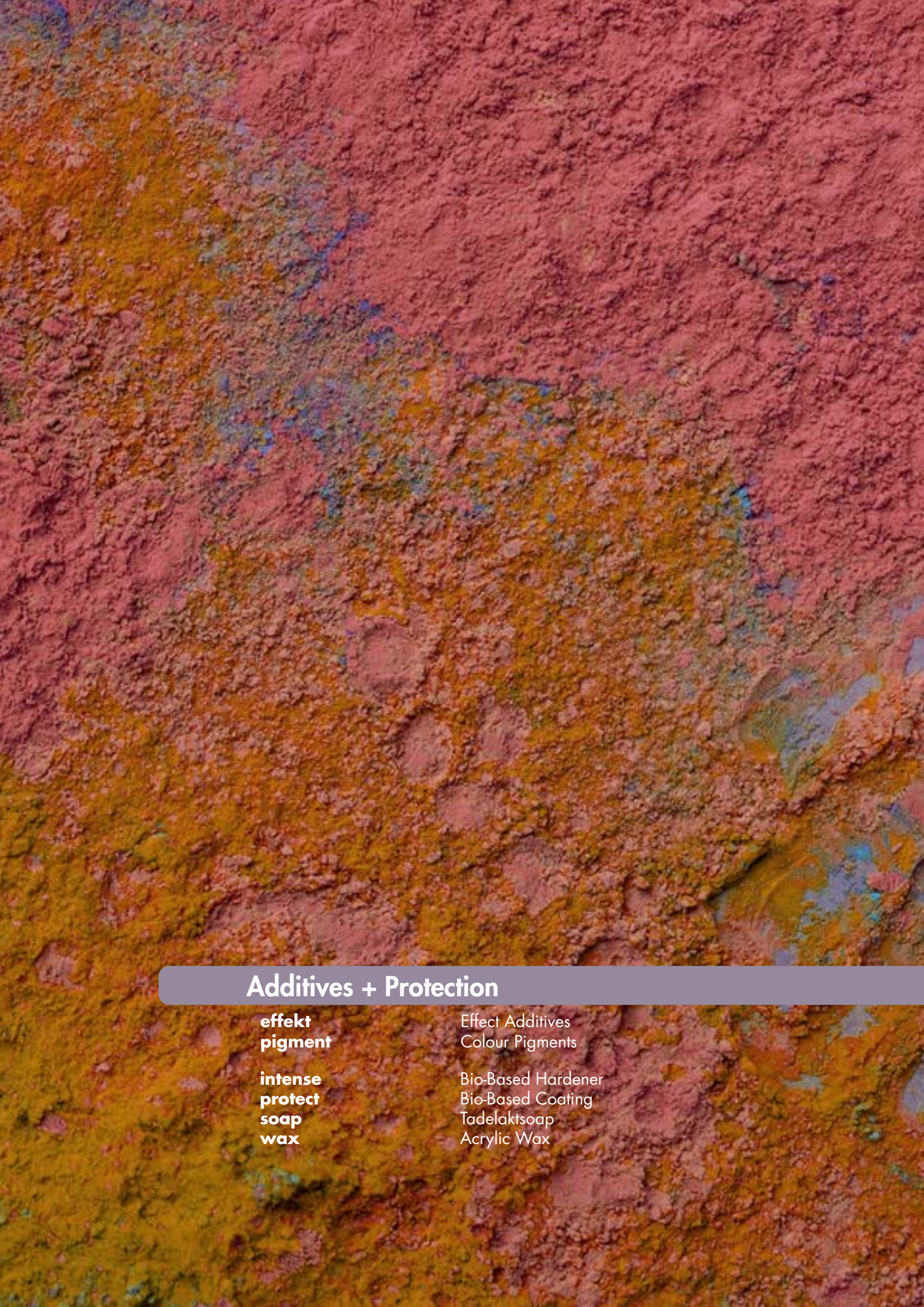
## Fairytale-Like

**STONE** is an original Moroccan Tadelakt, offering a wide range of elegant shimmering surfaces and colours. The name **STONE** comes from the technique of compacting the plaster with polished agates and then shining it with olive oil soap. Marbling, inlays, rounded elements and stylish stucco can all be achieved with **STONE**.

Its special water-repellent properties allow it to be used in damp rooms. **STONE** conjures up velvety cool, seemingly pulsating, almost sculptural surfaces on walls, showers, washbasins or tiled mirrors that tantalise the senses.







## Additives + Protection

**effekt  
pigment**

Effect Additives  
Colour Pigments

**intense  
protect  
soap  
wax**

Bio-Based Hardener  
Bio-Based Coating  
Tadelaktsoap  
Acrylic Wax

# Tierrfino effekt

Effect Additives



Straw



Flax



Mother of Pearl



Nero Ebano



Black Mica



Yellow Sienna

Our vegetable additives are straw and flax. The fine plant fibres are often used in the restoration of historical monuments, as they were the classic additives of the time. Used in our fine plasters or in **T-PAINT**, they give textured surfaces and rustic charm.

The mother-of-pearl effect additive is available in two variants. Coarse and fine. Due to the mother-of-pearl content, the shell grit creates reflective particles in the surface that give each of our clay finishing products a sophisticated look.

Additives can also consist of crushed minerals. Nero Ebano is a fine, matt black gravel. Our Black Mica is a mineral called biotite and the Yellow Sienna is a sand-coloured marble gravel. All three additives can be used to create purist effects and contrasts in our clay surfaces.



# Tierrfino pigment

Colour Pigments



Titanium Oxide White



Iron Oxide Mahogany



Persian Yellow



Congo Green



Gold Ochre



Verona Green



Orange



Cobalt Blue



Kassler Brown



Ultramarine Blue



Pompeian Red



Oxidschwarz



Iron Oxide Brick Red

Tierrfino pigments are made from pure earth and mineral pigments. These finely ground colour pigments can be used to colour all our fine plasters, as well as paints, brush-on plasters, **BASE** Fine Plaster and **BASE** clay plaster White in all possible colour spectra. We are happy to help you with your individual colour ideas. Just contact us and our colour fairy will be happy to help you design your four walls according to your ideas.

# Tierrfino intense

Bio-Based Hardener



Tierrfino **intense** is a bio-based additive for hardening clay products. It hardens and protects and makes clay plasters more abrasion resistant. Tierrfino intense is 100% natural and has been specially developed based on ancient Mayan knowledge combined with the expertise of Tierrfino and Impershield. Add this solution to your clay products and your clay paint or plaster will become more water repellent, more durable and more resistant to abrasion.

This additive can be used on both horizontal and vertical surfaces. For example, for a washbasin in front of a wall plastered with clay paint or clay plaster, or for a rammed earth floor.

# Tierrfino protect

Bio-Based Coating



The bio-based coating is designed to protect clay and lime plasters from moisture and splash water. With **protect**, clay plasters can be used in more areas, such as bathrooms and kitchens, without compromising their properties.

**protect** provides a water-repellent layer that is still permeable to water vapour. It is suitable for sealing clay paints and plasters in professional, industrial and domestic environments. The product can be applied to both horizontal and vertical surfaces to make them water-repellent.

**protect** is a natural waterproofing product for mineral substrates. It remains transparent and protects against discolouration caused by UV rays, weathering and various attacks.

# Tierrfino

## soap

Tadelaktsoap

# Tierrfino

## wax

Acrylic Wax



Tierrfino Tadelakt Soap **soap** is a pure olive soap for cleaning and saturating the surface of Tierrfino Tadelakt **STONE**. It also acts as a surface protection.

**soap** is a 100% natural, vegetable-based product. It is free of artificial surfactants and preservatives, easily soluble in warm water and can be sprayed

The moisturising effect of **soap** coats the Tadelakt **STONE** with a light greasy film, making it less susceptible to dirt and mechanical damage. It can also be used on our **ANTIQUÉ-PROVENCE** and **BETON-LOOK**, but the oil-based formula will intensify the colour tone.



Tierrfino **wax** is a surface protection based on methacrylic ester, waxes and pigments for the protection of clay surfaces.

The acrylic wax is very easy to use and is applied thinly to the surface to be sealed using a Japanese acrylic spatula or an oval brush. The wax does not need to be polished to increase the gloss level; the gloss is achieved automatically after drying. When the first coat is dry, a second coat of acrylic wax can be applied as an option.

**wax** provides a splash-proof surface that can be wiped off with a damp cloth. However, **wax** also robs the clay of its vapour permeability, so it should only be used where it is really necessary.





## Clay Building

**BASE  
KOMPAKT+**

Rammed Earth  
Interior Insulation System

# Tierrfino

## BASE

Rammed Earth



Red



White



Brown

## Monolithic Wall As A One-Off

Each rammed earth project is unique. From the preparation of the earth mixture to the handcrafted stamping process, each object special. The organic texture and warm, earthy tones remind us that nature is the most original artist.

**BASE** rammed earth is a link between the past and the present. It combines the centuries-old tradition of earth building with modern design and innovative technology.



# Tierrfino **KOMPAKT+** Interior Insulation System

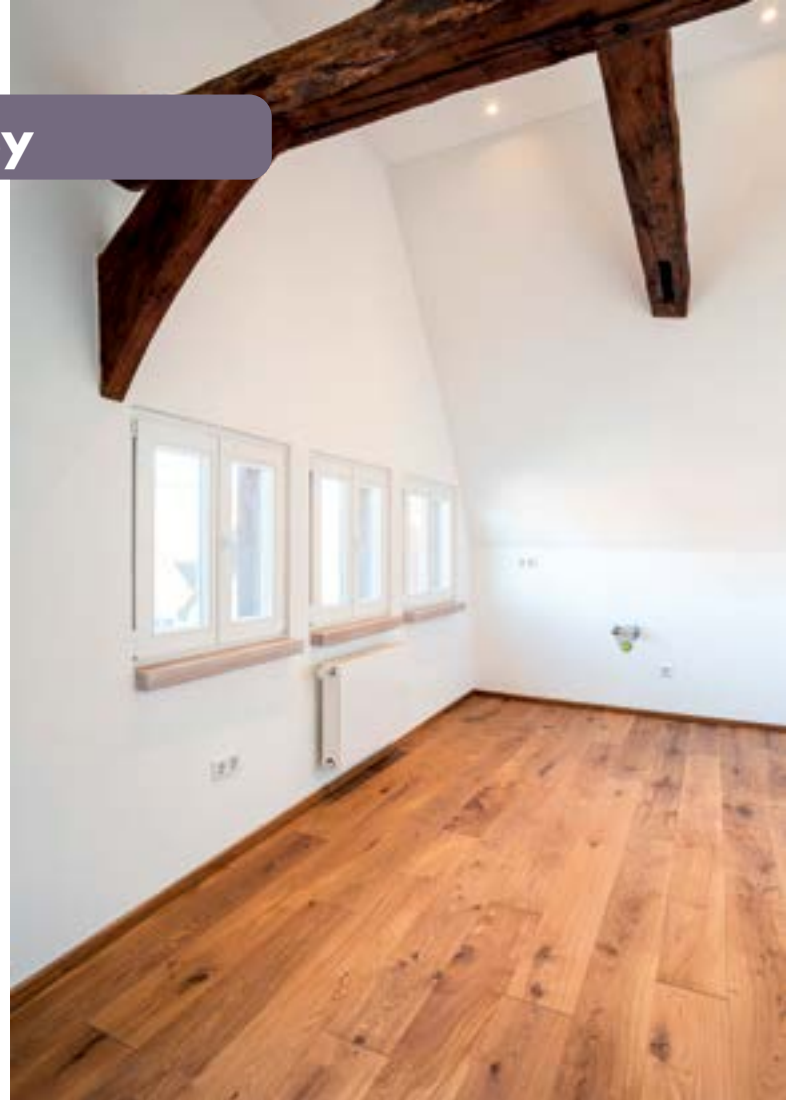




## Mould Remediation Made Easy

Tierrfino **KOMPAKT+** is a mineral interior insulation system for mould prevention and thermal bridge minimisation.

Tierrfino **KOMPAKT+** is the simple, quick and safe way to save energy with thin, yet efficient interior insulation. efficient interior insulation to save energy. The use of Tierrfino **KOMPAKT+** prevents mould growth by increasing the low surface temperatures of the building components, allowing them to rise above the critical value of 12.6 °C. This temperature in accordance with DIN 4108-2 is the minimum value for preventing condensation and mould growth. In addition, the indoor air humidity is buffered, depriving mould of its basis for growth.



# Don't Just Discover Tierrfino, Immerse Yourself In It



Our ‚**Experience Tierrfino**‘ brochures (will be published in English soon) provide detailed information on each product. From basic information and colour charts to a description of the processing steps, you will find everything you need in 6 pages, with a reminder of the special characteristics of our products:

Our Tierrfino products are made from washed sands, coloured clays, the finest flours and waxes, etc., in varying proportions, and each product has its own unique recipe, using only natural additives\* .

**effekt** gives our products even more design possibilities. Small additions of straw or flax fibres, fine or coarse mother-of-pearl and special coloured sands make walls unique.

Because all Tierrfino products deliberately avoid the use of plastics such as acrylates and dispersions. As all Tierrfino products deliberately avoid the use of plastics such as acrylates and dispersions, the processing is different, but not difficult. The processing is different, but not more difficult. We have produced a separate brochure for each product, illustrating the processing steps in a very practical way.

The ‚**Experience Tierrfino**‘ brochures are available for the following products and can be ordered from retailers or from [www.tierrfino.de](http://www.tierrfino.de):

- **BASE** Clay Plaster dry
- **BASE** Clay Plaster naturally-moist
- **DRY-PAINT** Powder Clay Paint
- **I-PAINT** Clay Paint
- **T-PAINT** Clay Brush-On Plaster
- **BASE** Clay Topcoat Fine Brown/Vintage White
- **DURO** Clay Topcoat Fine
- **X-WHITE** Clay Topcoat Fine
- **FINISH** Clay Topcoat Fine
- **BASE** Clay Plaster White
- **ANTIQUÉ-PROVENCE** Clay Design Surfacer
- **BETON-LOOK** Clay Design Surfacer
- **STONE** Tadelakt
- **KOMPAKT+** Interior Insulation System

If you would like to experience clay with all your senses, you are very welcome to attend our workshops (see [www.tierrfino.de](http://www.tierrfino.de)). Every year there is a short programme on various products. Both theory and practice are on the programme and whether beginner or professional, there is something for everyone.

For all our customers, we also offer free introductory workshops to match the material purchased. At Tierrfino, nobody is left alone. Anyone with a thirst for action will always find a helping hand.

\*Unfortunately we have to use small amounts of preservatives in our liquid products **I-PAINT**, coloured **DRY-PAINT** (liquid pigment), **fix**, **contact**.



Your Tierrfino-Dealer:

