



COMPANY PROFILE



**WE PRODUCE ABSOLUTE HIGH-END
PRECISION AND ONLY WHAT LIVES UP
TO THIS STANDARD LEAVES THE PIT
COMPANY.**

INHALT

About Us	4
Company	5
Industries	6
Machinery & Materials	7
Statement	8
Management Team	10
Quality	12
Quality Principles	13
Process	14
Products	16
Our Customers	18
Interview	20

ABOUT US

PIT means "Production In Time" and stands for quality-conscious just-in-time production.

The company was founded in 1990 by Mr. Jürgen Himmelsbach and Mr. Oswald Flaig in Stetten, in the district of Rottweil. In 2008, the insolvent company Lehmann GmbH in Gutach was acquired. This was followed by the construction of the company's own building in Sulgen and the continuous expansion of machines and employees. At that time, the company was still producing together with five employees on an area of around 125 square meters.

/ Values

At PIT, personal responsibility, innovative strength and reliability are very important. The company attaches great importance to its employees acting independently and developing innovative solutions. At the same time, it is important to PIT to be a reliable partner for its customers, always working to deadlines and with a focus on quality. These values form the foundation for PIT's success and characterize our daily dealings with each other and with our customers.

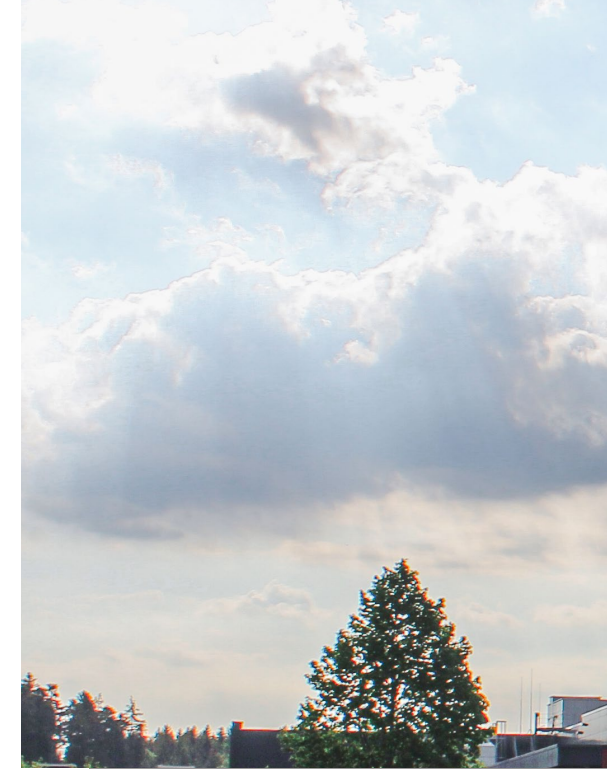
/ Vision

PIT's vision is to become a leading global supplier of machining technology. The company relies on innovative technologies and state-of-the-art manufacturing processes to deliver high-quality products and services to its customers.

PIT constantly strives to exceed its customers' expectations and achieve a leading position in the industry. The company attaches particular importance to sustainability and environmental compatibility in order to make its contribution to the environment.

/ Standort

The proximity of the two Production in Time plants means that processes can be completed more quickly. This allows employees to be deployed more flexibly and individually. The close proximity of the plants promotes efficient collaboration and allows us to react quickly to customer requirements.





Self-responsible

Each of us makes an important contribution to the success of our company through our performance. We always act responsibly, profit-oriented and value-driven and stand by our results.



Innovative

We think and act in terms of continuous improvement and innovation in all areas, and we are always open to new ideas and willing to constantly develop further. This is the basis of our success and the driving force behind our daily commitment, which goes far beyond the usual.



Reliable

Appreciation is our top priority. We are credible and reliable, respect the relevant rights, standards and cultures and expect the same from our partners.

INDUSTRIES

FIRST-CLASS PRODUCTS IN KEY INDUSTRIES

For over three decades, PIT GmbH has been supplying numerous well-known customers in leading industries worldwide. With our expertise, we are your contact for high-precision and technically excellent products.

/ Automotive

We constantly supply the automotive industry with high-precision and technically sophisticated products. The manufactured parts are installed in the interior as well as in the chassis and drives of motor vehicles. Our working methods and production processes are always linked to IATF 16949.

/ Construction

Production in Time has been supplying the construction industry with excellent products for decades. Renowned customers who specialize in fastening technology count on both our expertise and our perfected precision work. We support new projects within this industry from development to launch.

/ Mechanical Engineering

Turned parts from PIT adapt to the high requirements and quality standards of the mechanical engineering industry at all times. Our ultra-modern machines process complex parts made of different materials exactly to size and ensure safe and trouble-free operation.

/ Medical Technology

Implants, wound clamps, mouth mirror handles and many other special instruments are part of our product portfolio within the medical technology sector. In compliance with DIN EN ISO 13485, we always meet the requirements of our customers.

/ Agricultural Technology

We also have a strong presence in the agricultural sector / agricultural technology. As is usual in the automotive industry, precisely manufactured and technically sophisticated products are indispensable here too. Compliance with strict standards and the production of high-quality parts are a matter of course for us in this sector too.

/ E-Bike

Opening up new markets requires a lot of patience and self-confidence. Since 2020, Production in Time has been successfully supplying precision parts for the up-and-coming two-wheeler industry, especially in the e-bike segment.

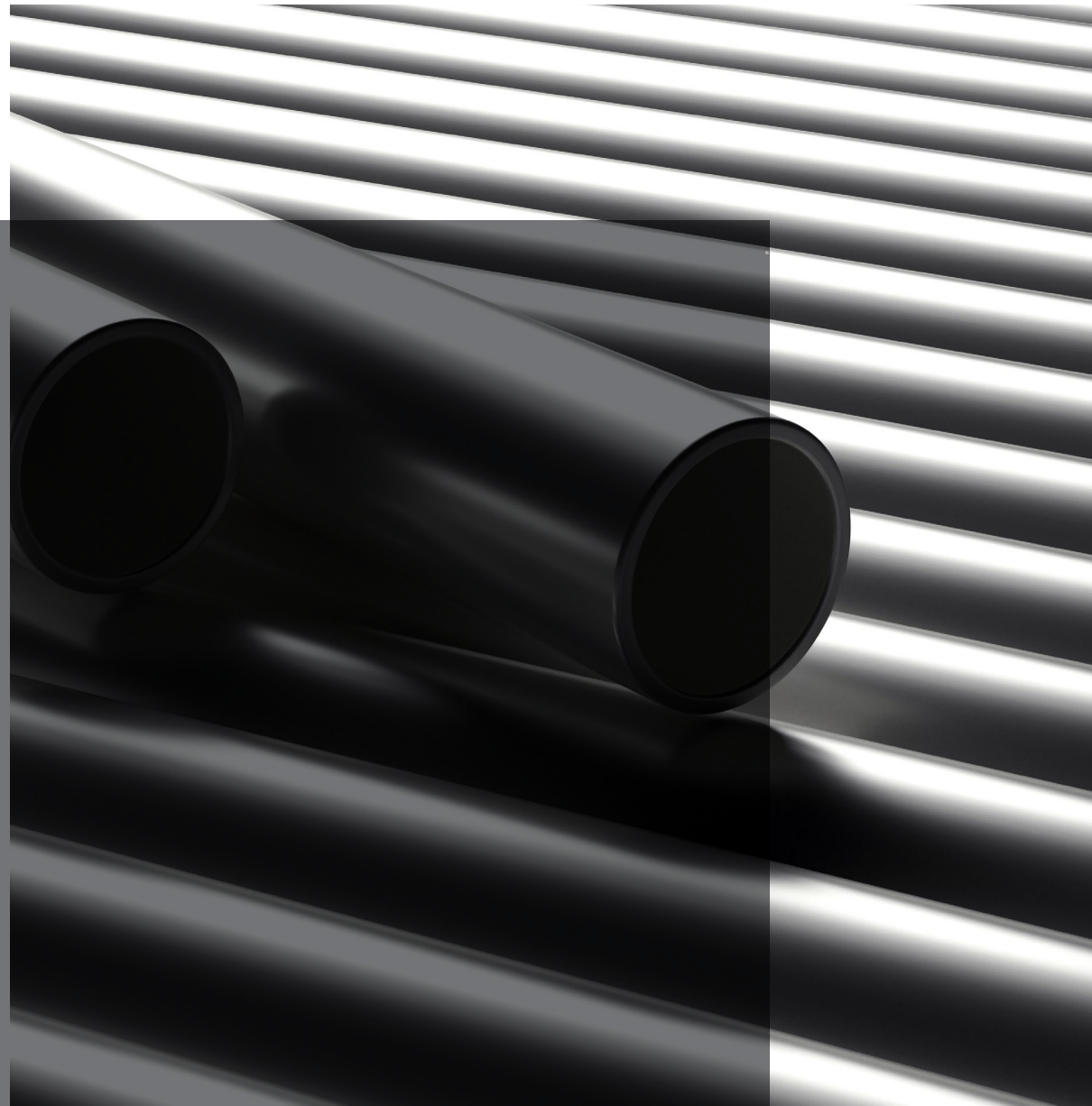


MACHINERY & MATERIALS

- 2x CNC short turning machines from CMZ
- 3x CNC short turning machines from LICO
- 7x CNC long turning machines from TORNOS
- 12x CNC long turning machines from HANWHA
- 12x Rotary transfer machines from EUBAMA

The primary goal of "Production in Time" is to produce excellent products from high-quality raw materials. Only excellent material can contribute to the desired quality. For this reason, we have put together a carefully selected pool of certified and professional suppliers. Together with our business partners, we are able to respond to customer requests in an agile and market-oriented manner and thus consistently meet high customer expectations.

- **Rust and acid-resistant steel:**
1.4104, 1.4105, 1.4305, 1.4401, 1.4404, 1.4441, 1.4571
- **Non-ferrous metals:**
CuZn36pb3, CuZn38pb1,5, CuZn38pb3, Cusn6, Bz4, Cutep, Almgspb/Alcumgpb
- **Machining steel / heat-treated steel:**
1.0715, 1.0718, 1.0727, 1.0736, 1.0737, 11SMnPb30, C15, C22, Ck35, Ck35 PB, Ck45, Ck45PbK, 100 Cr6, 42CrMo4, ETG 25, ETG 88, ETG 100, 16MnCr5



STATEMENT

/ Words of the CEO

As CEO of PIT, I am honored to lead a team of dedicated professionals who have a passion for excellence in the metalworking industry. With in-depth engineering knowledge and a deep understanding of market trends, my role is to drive innovation, foster collaboration and ensure that PIT remains at the forefront of our industry.

In my view, what sets PIT apart from our competitors is our unwavering commitment to exceeding customer expectations. Our relentless pursuit of machining precision, attention to detail and ability to adapt to evolving technologies make us a trusted partner for customers in a variety of industries.

A key factor that sets us apart is our constant pursuit of quality and reliability. We understand the importance of delivering accurate and durable products on time and continually invest in the latest technology to ensure we meet and exceed industry standards.

In addition, our ability to offer tailor-made solutions and customization options based on individual customer requirements gives us a competitive edge in the market.

Our mission at PIT is to be the global leader in machining technology. We achieve this by driving innovation, delivering outstanding quality and continuously exceeding customer expectations. Our core values of integrity, accountability and environmental responsibility guide our actions and underpin our commitment to sustainable growth and customer satisfaction.

- Katrin Deniz Himmelsbach



Driven by our relentless pursuit of excellence, PIT is committed to exceeding customer expectations with precision, innovation and unparalleled service. We don't just shape metal, we shape the future of the manufacturing industry.

MANAGEMENT TEAM

/ The Experts



PIT's senior management is a team of experienced and visionary leaders who drive the company forward with vision and strategic skill. Led by our CEO and supported by a dedicated management team, we are passionate about the success and growth of PIT.

Our leaders have many years of experience and expertise in the metalworking industry and the various sectors we serve. They are characterized by their ability to develop innovative solutions, tackle challenges and inspire our customers with tailor-made solutions.



Katrin Deniz Himmelsbach, M.A.
/ CEO

The Managing Director of PIT is responsible for the company's strategic decisions. She has extensive experience in managing employees and is an accomplished marketing expert who strengthens the company's public image and drives external communication.



Selcuk Kurban, B.A.
/ Authorized signatory
/ Head of Commercial Controlling

Our Head of Commercial Controlling at PIT is an experienced financial expert with in-depth knowledge and strategic thinking. He is responsible for the comprehensive financial analysis and continuous improvement of commercial processes to ensure the growth and success of PIT.



Jan Trenkle
/ Head of Operations

Our Head of Operations at PIT is a highly skilled production management expert with a passion for excellence and efficiency. He is responsible for managing all operational processes and implementing initiatives to improve production efficiency and quality.

The management team at PIT combines experience and expertise to run the company successfully.



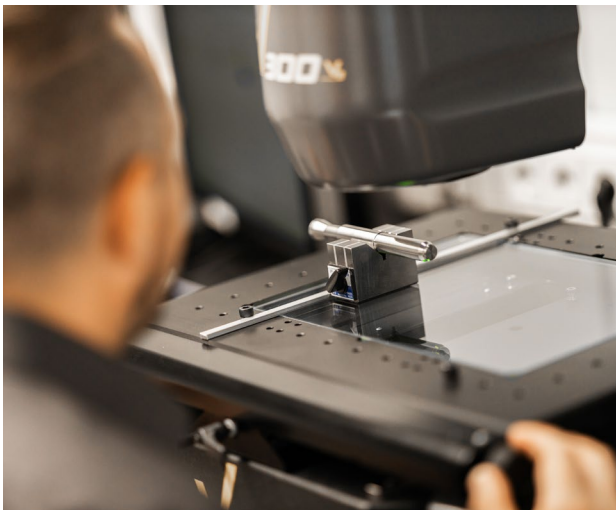
QUALITY

/ The key to success

PIT GmbH is one of the few medium-sized companies in the industrial sector to be successfully certified to ISO 9001 and IATF 16949, the highest standard for the automotive industry.

Due to the production of complex parts for the medical industry, we are also certified according to ISO 13485. Certification to DIN EN ISO 14001 is a further building block in our company's commitment to the environment.

The combination of high-precision and high-performance 3D measuring machines for quality assurance in the production facilities guarantees our customers quality and adherence to deadlines. This makes it possible to react at an early stage, before errors can even occur. Trained employees monitor daily production at SPC measuring stations using efficient test procedures.



OUR QUALITY PRINCIPLES



CUSTOMER SATISFACTION

We work closely with our customers to understand their requirements, develop customized solutions and meet their expectations.



MANAGEMENT OF CUSTOMER-SUPPLIER RELATIONSHIP

We value close cooperation with our suppliers and customers to ensure a smooth supply chain.



ZERO-DEFECT PHILOSOPHY

We aim to provide flawless products and services and promote the continuous improvement of our processes and products.



CONTINUOUS IMPROVEMENTS

We strive for excellence in all aspects of our business and focus on continuous improvement to optimize our performance and efficiency.



INVOLVEMENT OF EMPLOYEES (BOTTOM-UP-APPROACH)

We promote an open corporate culture in which the knowledge and ideas of our employees are valued and included in the decision-making process.



COMMITMENT TO THE ENVIRONMENT

We are aware of our responsibility towards the environment and take targeted measures to minimize our impact on the environment.



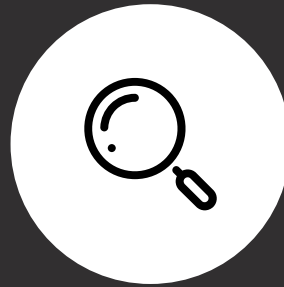
WORK SAFETY

We strive to create a safe working environment for our employees and rely on extensive training and strict safety guidelines to minimize the risk of workplace accidents and injuries.

OUR PROCESS

At PIT, we attach great importance to effective and smooth cooperation with our customers. We want to ensure that your requirements are met in the best possible way and that optimal results are achieved. For this reason, we have developed a clear work process consisting of five key process steps that we will go through when working with you.

With these five process steps, we ensure that we offer you the best possible cooperation and first-class solutions in machining technology.



1

Feasibility analysis

This important tool is the cornerstone for every single project that starts up in our company.



2

Precise piece time calculation

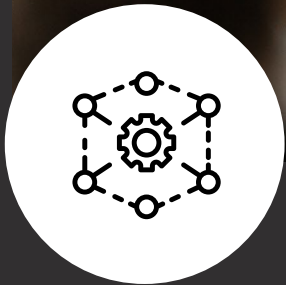
Determining the cycle times has a huge impact on the process cycle. A professional approach involving the know-how of experienced employees is a matter of course for us.



3

Detailed and fair calculation

Direct and open communication with both suppliers and customers should not be neglected when it comes to pricing. We have been working successfully with various raw material and tool suppliers for years and feel their mutual trust.



4

Offer development



5

Project planning & development

The use of professional "requirements engineering" is the basis for preparing a quotation. No quotation leaves our company until it has been personally agreed with our customers.

We use the APQP process to steer our projects to success in a targeted manner. The individual milestones are closely monitored and always completed with professional commitment.

OUR PRODUCTS

For more than three decades, PIT GmbH has been a reliable supplier for renowned customers in leading industries worldwide. Whether in the automotive, mechanical engineering, medical technology, construction, agricultural technology or e-bike industries - we are your competent partner for high-precision and technically sophisticated products. Thanks to our in-depth expertise, we ensure that we meet the specific requirements of our customers and offer them solutions at the highest level.

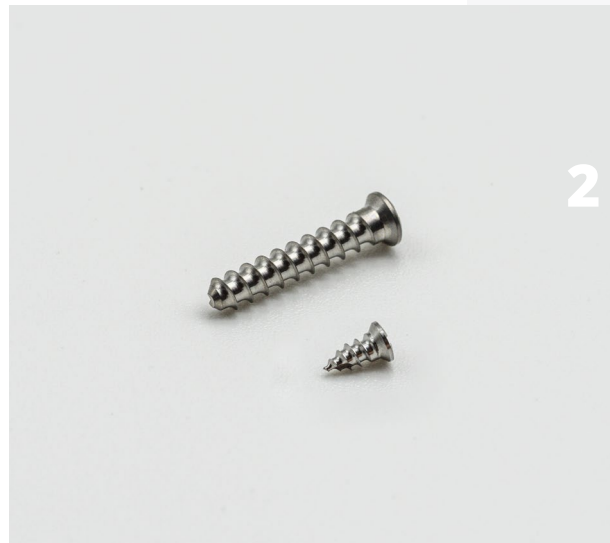


**High-precision
and technically
outstanding products
for various industries
worldwide.**



The invisible heroes of the construction industry

Threaded studs are essential construction elements that play an important role in various applications. They are used in many different ways in the construction industry, such as connecting steel beams, fastening concrete structures, suspending ceilings and other structural applications.



Precision and durability for life-changing applications

Our titanium implants are used in medical applications, particularly in cranial and hand surgery. They are characterized by high biocompatibility, which means that they are well accepted by the body without causing allergic reactions. They are also extremely insensitive and can often remain in the body for a lifetime without needing to be replaced.



3

Reliable connections in the automotive industry and beyond

Hose fittings are highly specialized connectors that are used in various industries, including the automotive industry. Thanks to their special design, they guarantee a secure connection of hoses to each other or in combination with other components.



4

High-quality solutions for efficient and reliable drives

Polygonal screws and ring fittings are used in the bicycle and motorcycle industry, particularly in e-bike drives and motorcycle brakes. Due to its specific properties, aluminum plays an important role in this industry.



5

A wide range of precision turned parts for customized solutions.

We are proud to offer you a wide range of precision turned parts in various shapes and sizes.

Our expertise enables us to offer customized solutions for your specific requirements. From small, intricate parts to larger, complex turned parts, we cover a broad spectrum to ensure your requirements are met.

OUR CUSTOMERS

At PIT, our customers are at the heart of everything we do. We are proud to be a trusted partner in the metalworking industry for companies from various sectors. From the automotive and medical industries to the mechanical engineering and electronics sectors, we support our customers in the realization of their projects.

Our success is based on long-term cooperation with our customers and the trust they place in us. We attach great importance to working in partnership and listen carefully to our customers in order to understand their individual requirements and develop customized solutions.

Our customers include, among others:

- KLS MARTIN Group
- HILTI AG
- BROSE Fahrzeugteile
- DURA Automotive Systems
- PORSCHE eBike Performance
- BÖLLHOFF
- KERN-LIEBERS Group



Working with PIT was extremely professional and efficient. They understood our requirements precisely and delivered high-quality products.



These customer opinions confirm the quality of our work and motivate us to keep improving.

**MORE THAN 50
CUSTOMERS
HAVE ALREADY
PLACED THEIR
TRUST IN US**



**Porsche
eBike
Performance**

Porsche eBike Performance GmbH

[...] The cooperation with PIT is very cooperative and always on an equal footing. We value PIT as a very reliable and competent partner. Parts quality and adherence to delivery dates are always impeccable and not just empty words. [...]

GA Actuation
Systems

GA Actuation Systems GmbH

[...] The cooperation with PIT is very good. PIT reacts quickly and reliably to changes due to the current very volatile market situation. All orders were delivered on time and in very good quality. [...]

KLS martin
GROUP

Karl Leibinger Medizintechnik GmbH & Co. KG

[...] We have valued them for many years as a reliable partner who puts quality and delivery performance first, and we look forward to continuing our excellent cooperation in the future. [...]

QUESTIONS & ANSWERS



Q

What are PIT's core values and how do they influence the work?

A

At PIT, quality, innovation, customer focus and teamwork are our core values. Quality is our top priority, both in products and services. We strive for continuous improvement and innovation to provide our customers with the best solutions. Customers are at the heart of everything we do and we value partnership, collaboration and open communication. Teamwork is important to us in order to achieve outstanding results.

Q

What makes PIT an attractive employer and how do you promote the further development of your employees?

A

PIT is an attractive employer because it is important to us to offer our employees an inspiring and motivating working environment. We value their expertise and encourage their professional development through regular training and development. At PIT there are also opportunities for promotion and professional growth. We value teamwork and offer a supportive network where our employees can reach their full potential.

Q

What advantages does PIT offer its customers compared to other companies?

A

PIT offers several advantages. We have many years of experience and expertise in machining technology to offer customized solutions. We use the latest technology to produce high quality products. Our customer service is first class and we work closely with our customers to meet their individual requirements. With our broad industry experience, we bring industry-specific know-how and develop optimal solutions for our customers.

Q

How important is customer feedback for PIT and how do you use it to improve your services?

A

Customer feedback is important to us. We listen carefully and use it to improve our work. Feedback allows us to identify strengths and weaknesses, optimize processes and adapt solutions to customer needs. Working closely with customers enables us to meet their expectations and ensure their satisfaction.

Q

What is PIT's vision for the future of the metalworking industry and how would you like to contribute to it?

A

Our vision is to be a leader in the metalworking industry and to offer innovative solutions. We want to expand our expertise in machining technology and drive forward new technologies through research and development. We also pursue sustainability goals and want to implement environmentally friendly manufacturing processes. We want to deliver high-quality products and support our customers in the implementation of their projects in order to further develop the metalworking industry.

Q

How does PIT deal with technological innovations?

A

At PIT, we strive to be at the cutting edge of technology in order to provide our customers with innovative solutions. We follow technological trends and invest in modern machinery and equipment to enable more efficient and precise manufacturing processes. This has a direct impact on our business as it enables us to increase productivity, quality and customer satisfaction.



www.productionintime.com
info@productionintime.com

+49 (0) 7422 23614

Dr.-konstantin-Hank-Str. 8
78713 Schramberg, Germany